



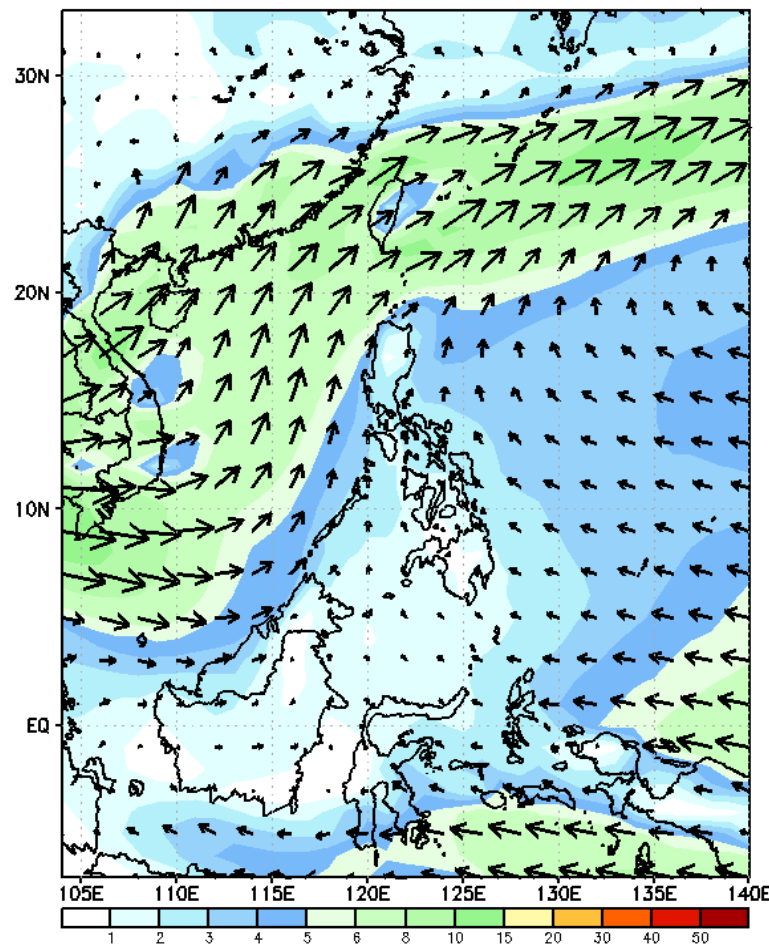
# Week 1 & Week 2 Forecast for the Philippines using GEFS Model



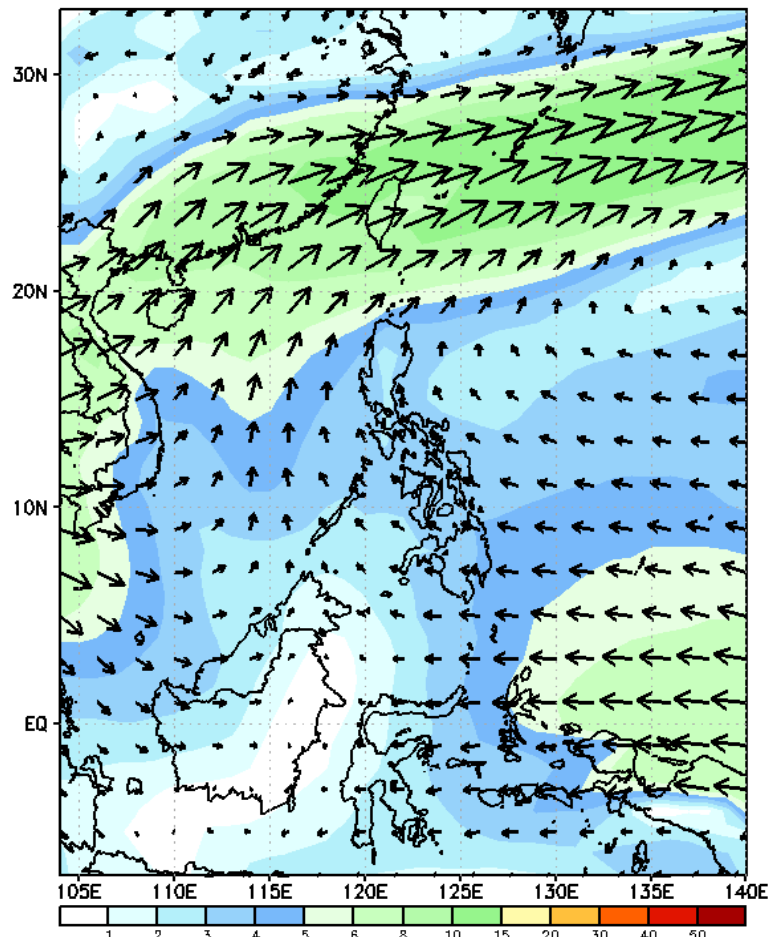
# GEFS Week-1 Wind Forecasts:

Week 1: Jun 07-13, 2024

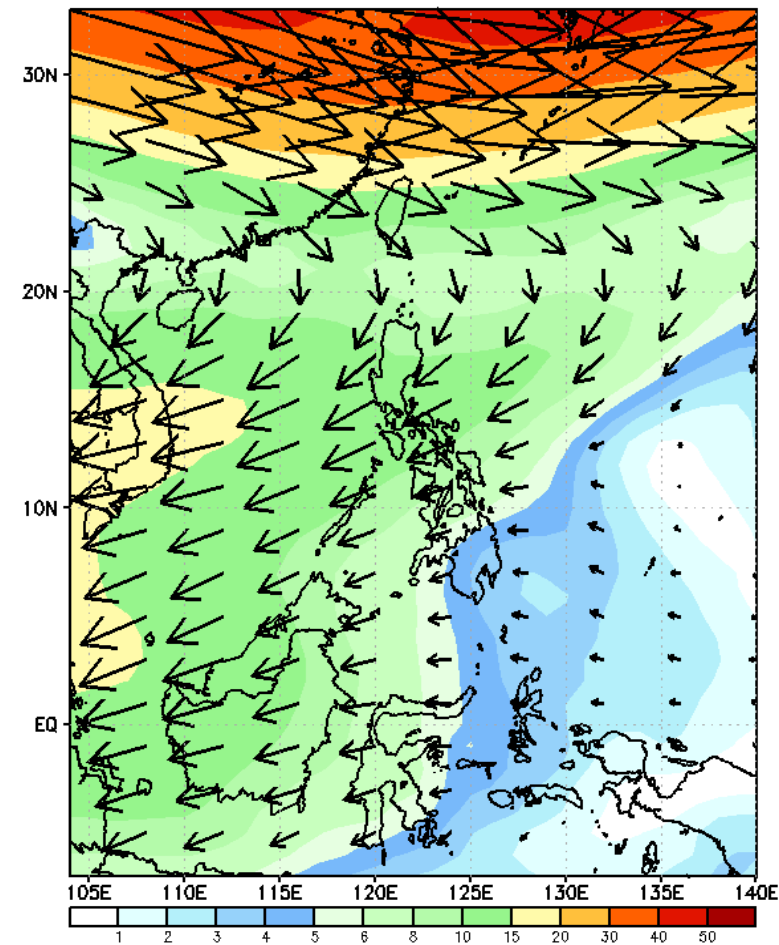
GEFS Week-1 850-hPa Wind Total  
Valid: 20240607 - 20240613



GEFS Week-1 700-hPa Wind Total  
Valid: 20240607 - 20240613

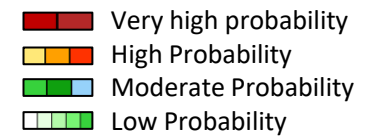


GEFS Week-1 200-hPa Wind Total  
Valid: 20240607 - 20240613



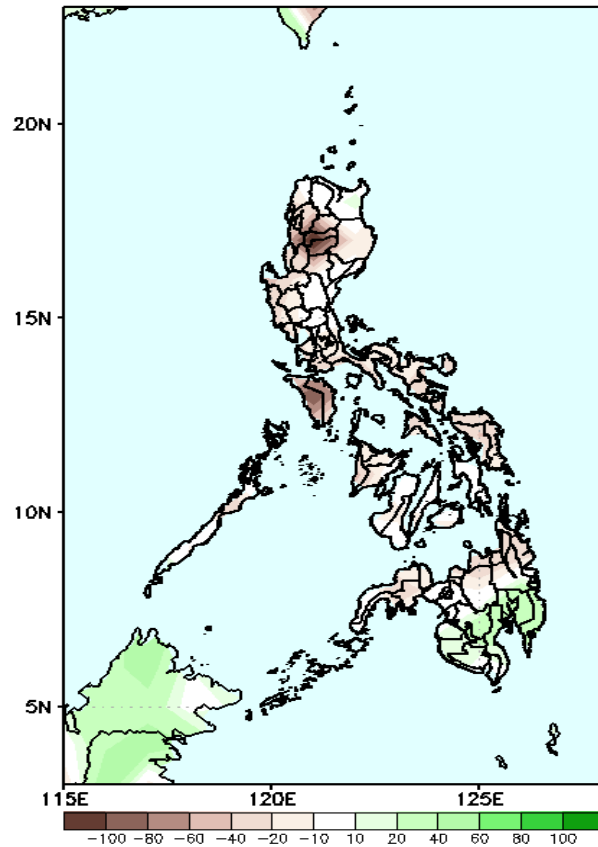
Southwest Monsoon affecting some parts of Western Luzon. Easterlies affecting the rest of the country .

# Precipitation Anomaly and Exceedance Probability > 25/50 mm



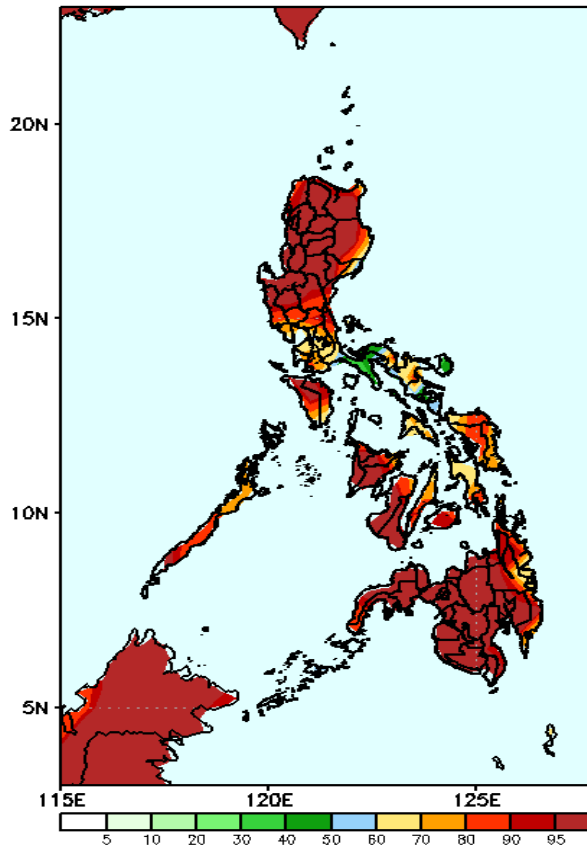
Week 1: Jun 07-13, 2024

GEFS Week-1 Precip Anomaly  
Valid: 20240607 - 20240613



Rainfall deficit of 20-100mm is expected in most parts of the country except in southern Mindanao where there is 20-70mm increase of rainfall.

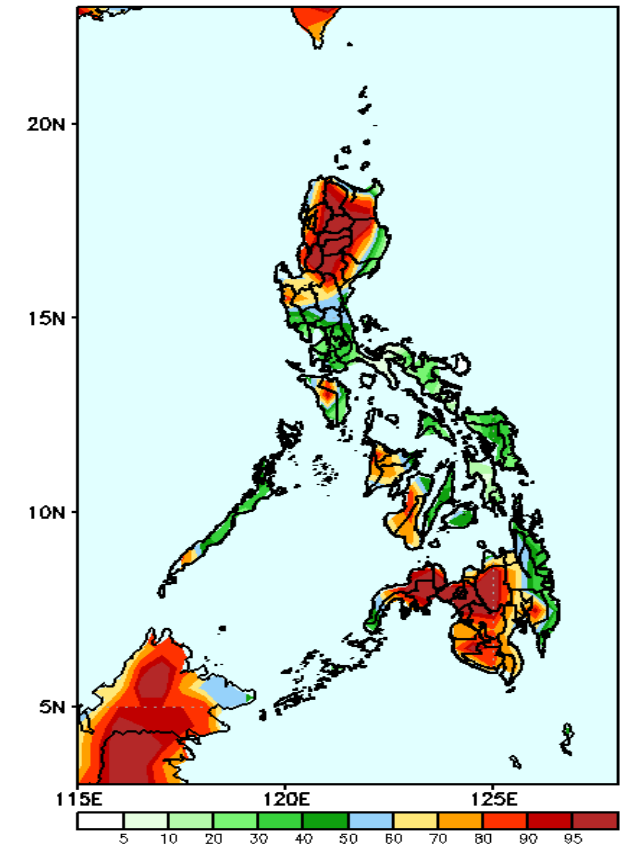
GEFS Week-1 Exceedance Prob. > 25mm  
Valid: 20240607 - 20240613



### Probability to Exceed 25mm

- High to very high over most parts of the country;
- Moderate to high over southern Quezon and Bicol Region.

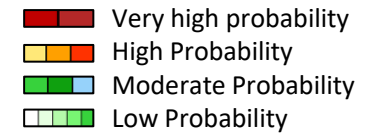
GEFS Week-1 Exceedance Prob. > 50mm  
Valid: 20240607 - 20240613



### Probability to Exceed 50mm

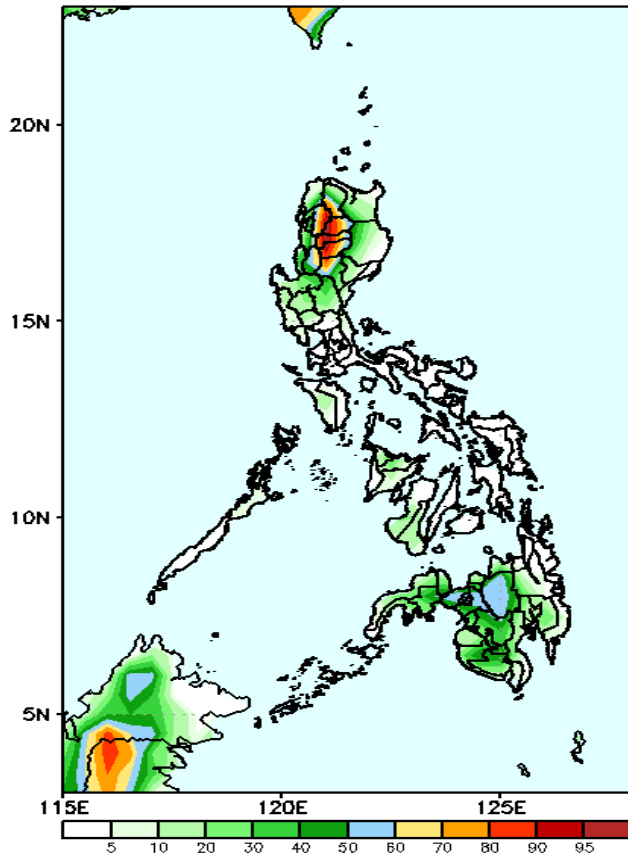
- High to very high over most parts of CAR, Bukidnon and most of Western and Central Mindanao;
- Moderate to high over the rest of Northern Luzon, most of Central Luzon, Mindoro Provinces, southern Palawan, Western Visayas, Negros Oriental and the rest of Mindanao;
- Low to moderate over the rest of the country.

# Exceedance Probability > 100/150/200 mm



## Week 1: Jun 07-13, 2024

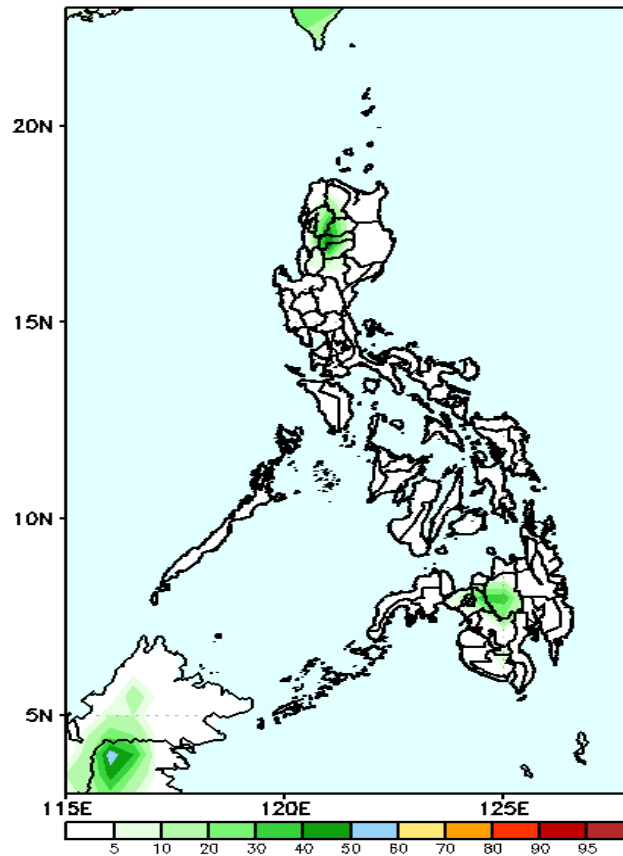
GEFS Week-1 Exceedance Prob. > 100mm  
Valid: 20240607 - 20240613



### Probability to Exceed 100mm

- Moderate to high over most of CAR, Nueva Vizcaya, Bukidnon and Lanao Provinces;
- Low over the rest of the country.

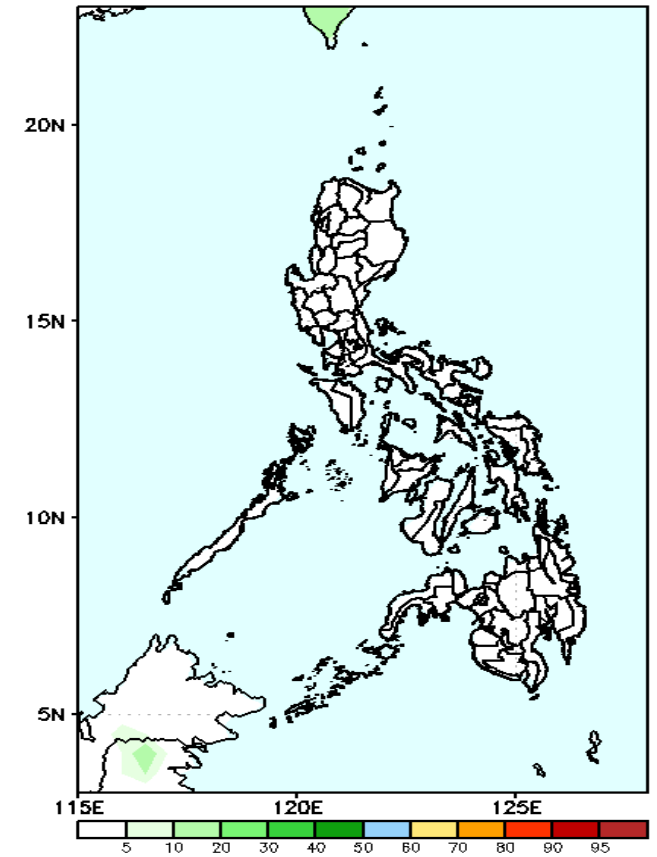
GEFS Week-1 Exceedance Prob. > 150mm  
Valid: 20240607 - 20240613



### Probability to Exceed 150mm

- Low across the country.

GEFS Week-1 Exceedance Prob. > 200mm  
Valid: 20240607 - 20240613



### Probability to Exceed 200mm

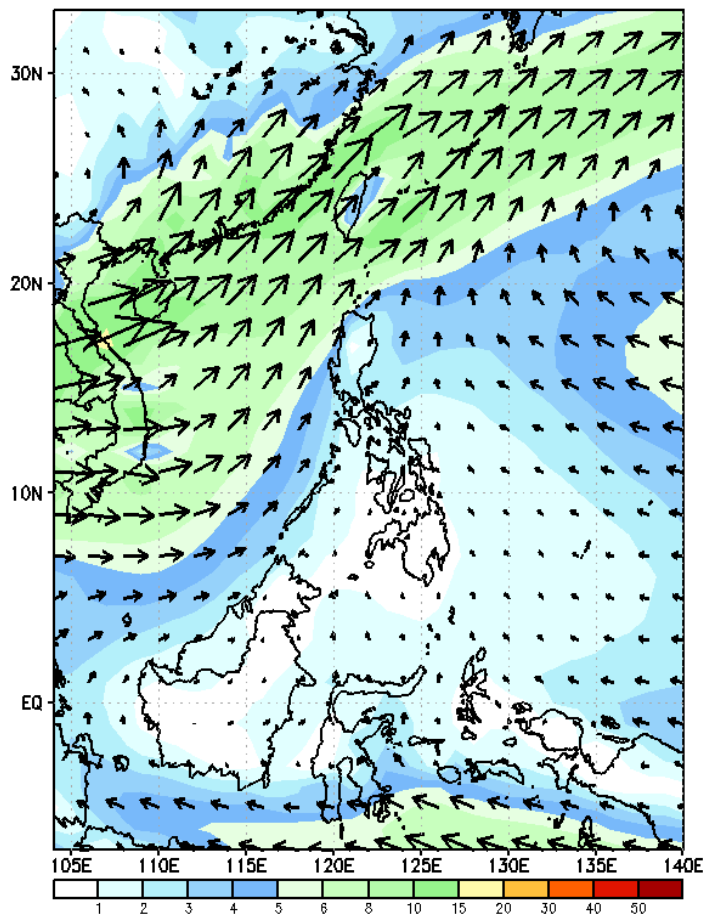
- Low across the country.



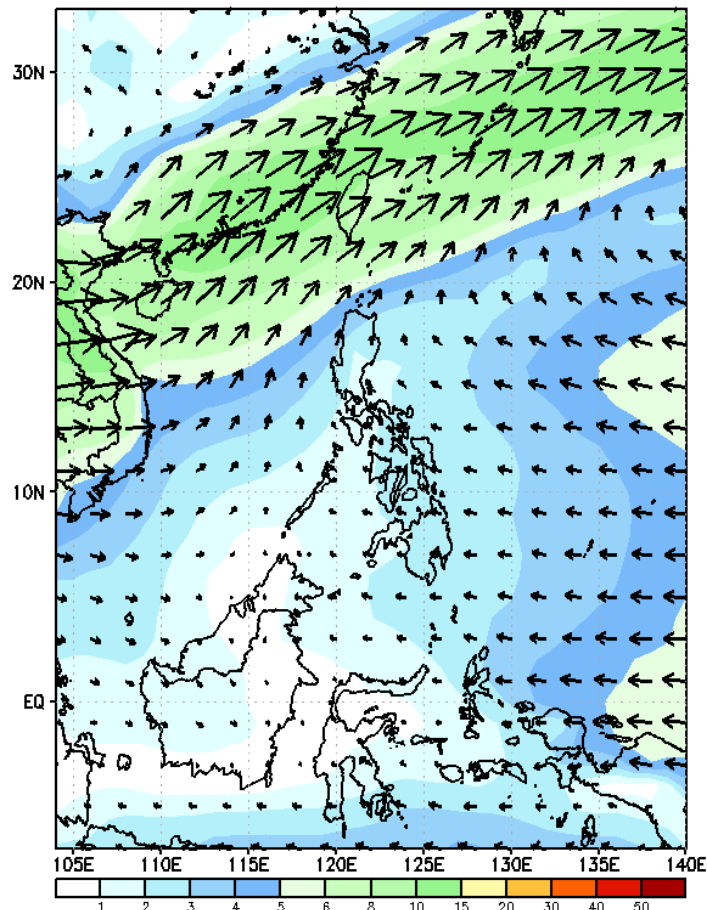
# GEFS Week-2 Wind Forecasts:

## Week 2: Jun 14-20, 2024

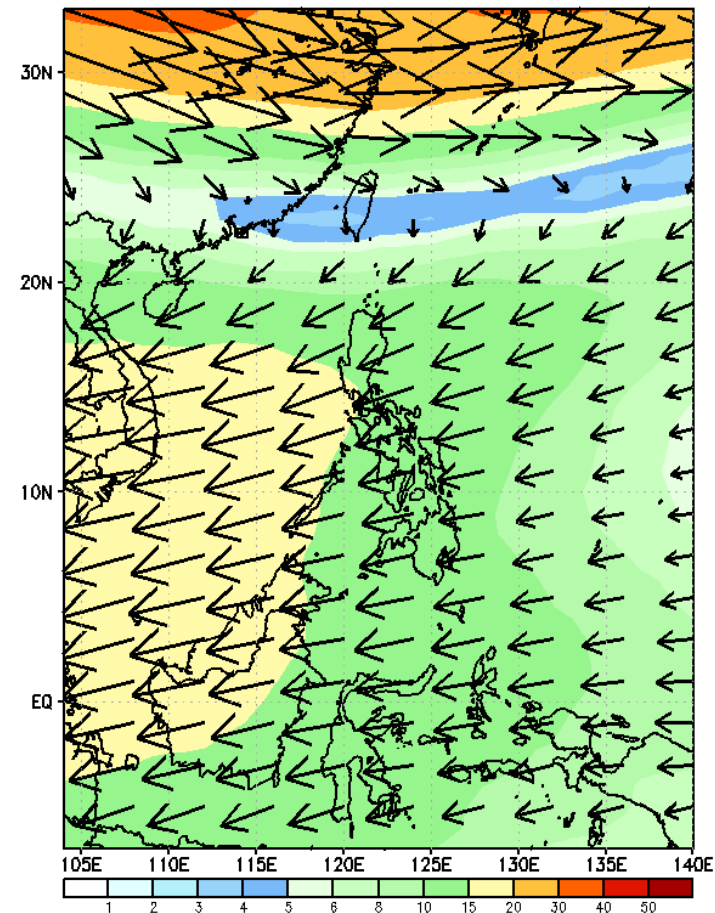
GEFS Week-2 850-hPa Wind Total  
Valid: 20240614 - 20240620



GEFS Week-2 700-hPa Wind Total  
Valid: 20240614 - 20240620

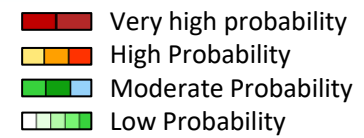


GEFS Week-2 200-hPa Wind Total  
Valid: 20240614 - 20240620



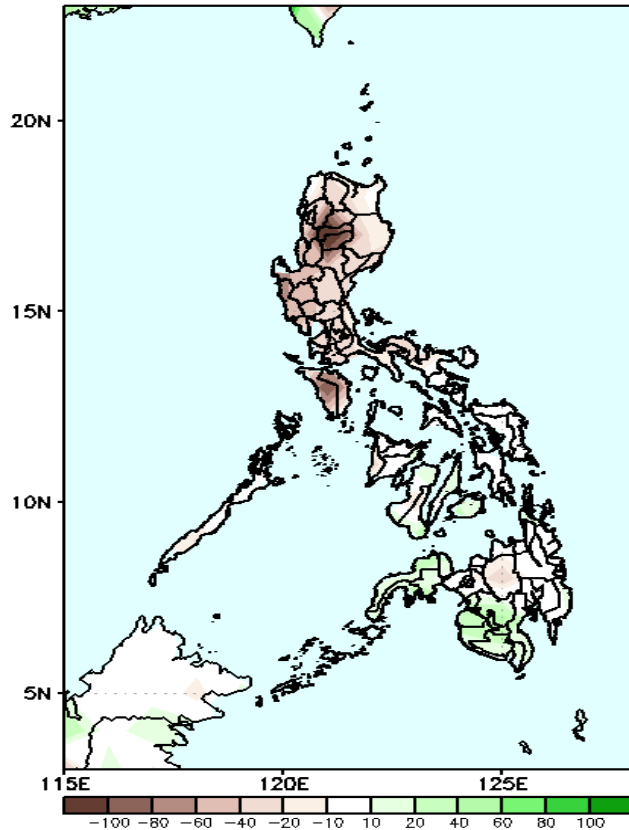
Southwest Monsoon affecting Western Luzon. Easterlies affecting the rest of the country .

# Precipitation Anomaly and Exceedance Probability > 25/50 mm



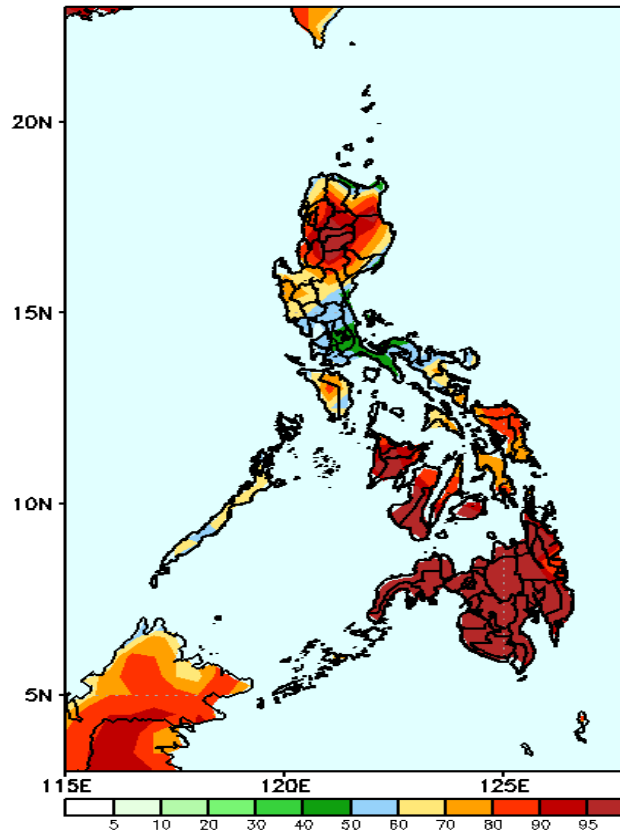
Week 2: Jun 14-20, 2024

GEFS Week-2 Precip Anomaly  
Valid: 20240614 - 20240620



Rainfall deficit of 20-100mm is expected in most parts of the country except in western Mindanao where there is 20-60mm increase of rainfall.

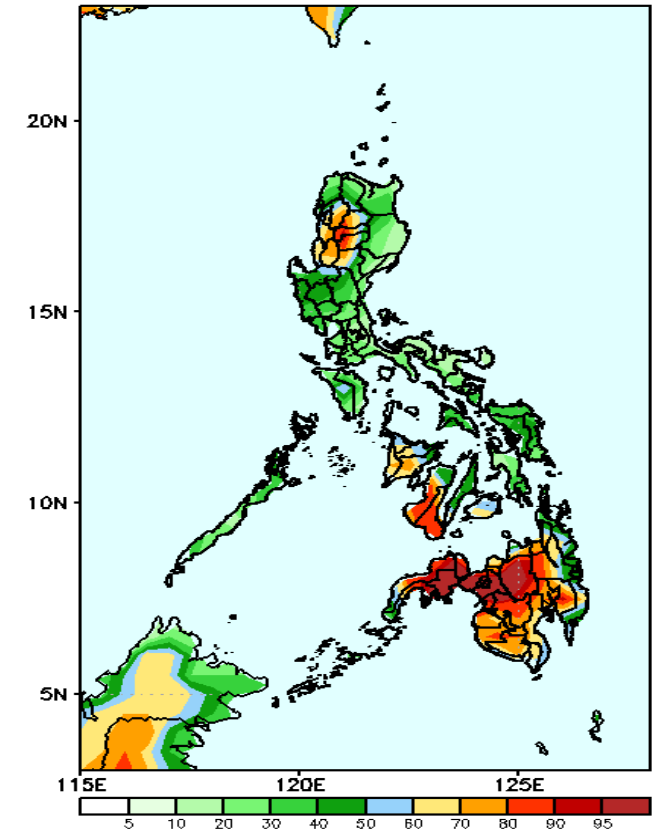
GEFS Week-2 Exceedance Prob. > 25mm  
Valid: 20240614 - 20240620



## Probability to Exceed 25mm

- High to very high over Northern and Central Luzon, Visayas and Mindanao;
- Moderate to high over the rest of Luzon.

GEFS Week-2 Exceedance Prob. > 50mm  
Valid: 20240614 - 20240620



## Probability to Exceed 50mm

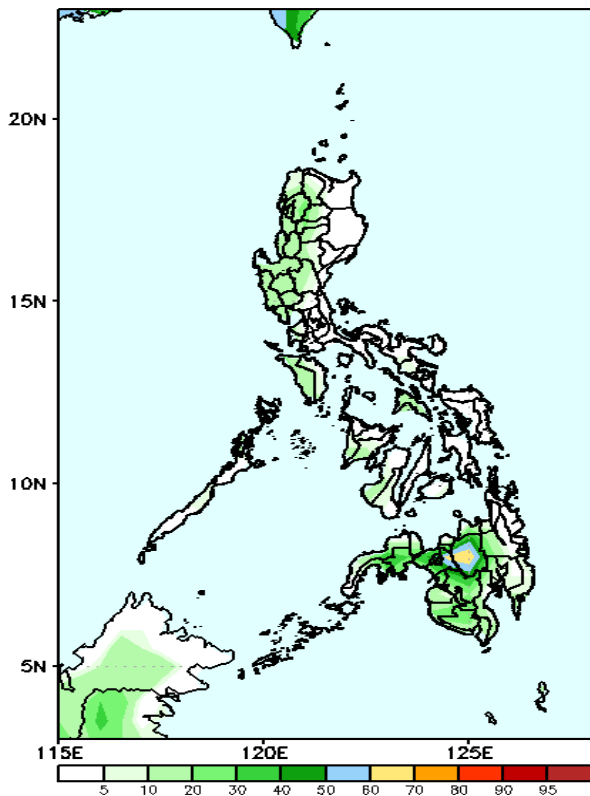
- High to very high over most of Western and Central Mindanao;
- Moderate to high over the rest of the country.

# Exceedance Probability > 100/150/200 mm

- Very high probability
- High Probability
- Moderate Probability
- Low Probability

## Week 2: Jun 14-20, 2024

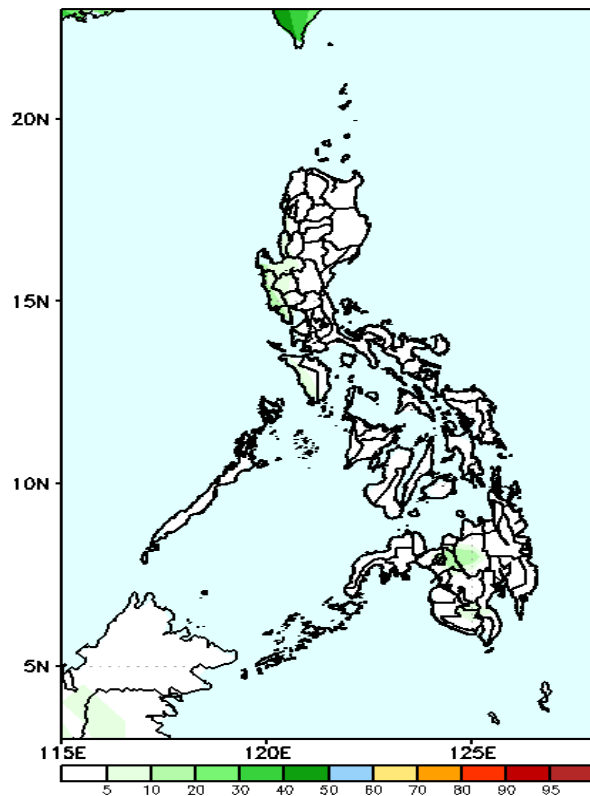
GEFS Week-2 Exceedance Prob. > 100mm  
Valid: 20240614 - 20240620



### Probability to Exceed 100mm

- Moderate to high over Bukidnon and western Mindanao
- Low across the rest of the country.

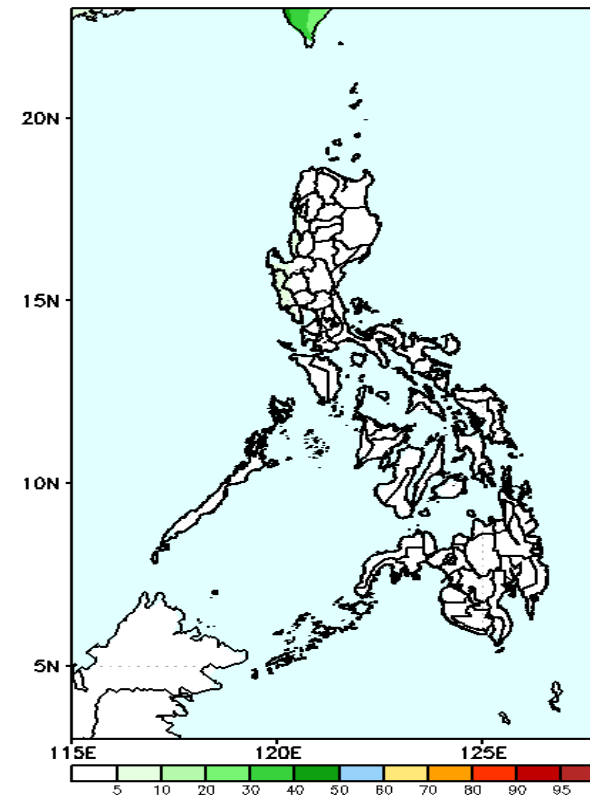
GEFS Week-2 Exceedance Prob. > 150mm  
Valid: 20240614 - 20240620



### Probability to Exceed 150mm

- Low across the country.

GEFS Week-2 Exceedance Prob. > 200mm  
Valid: 20240614 - 20240620

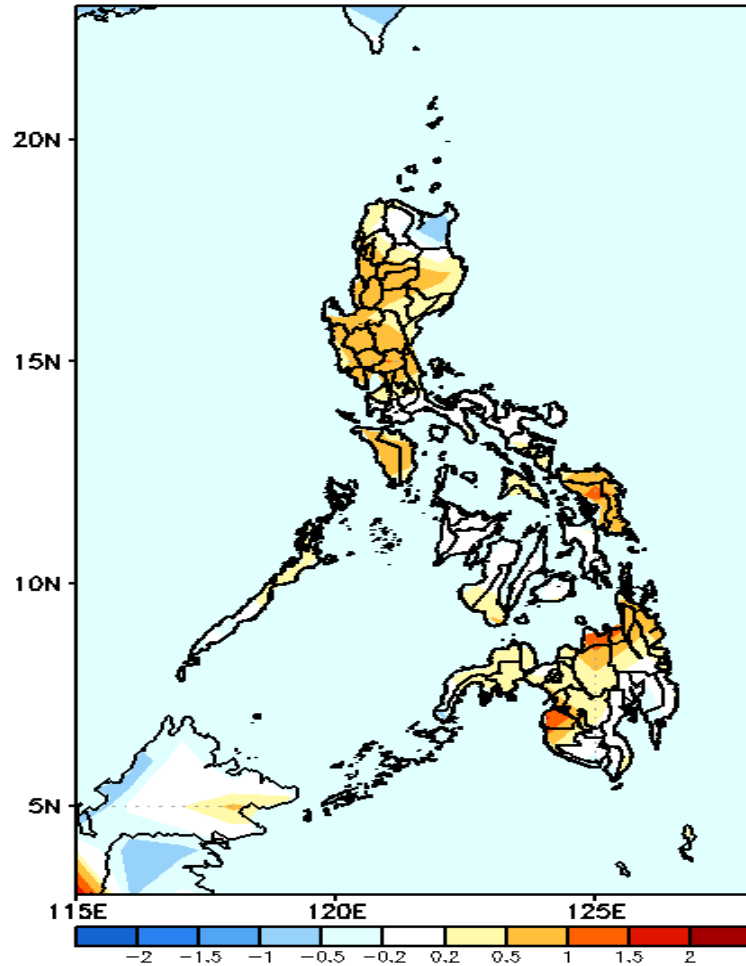


### Probability to Exceed 200mm

- Low across the country.

# GEFS Week-1 & 2 Forecasts: T2m Anomaly

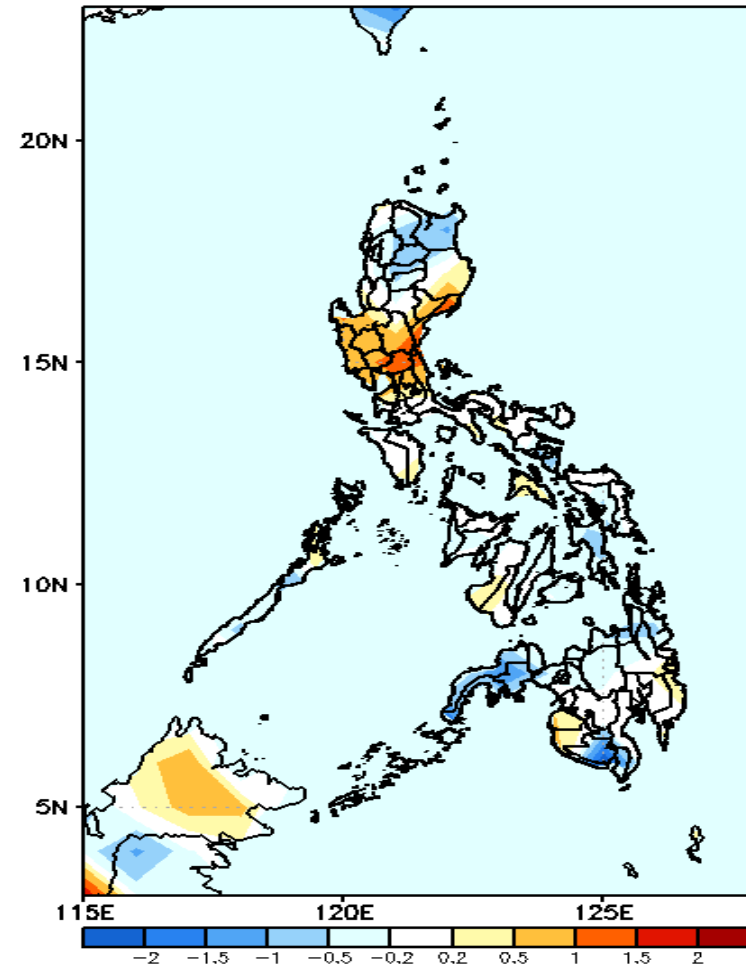
GEFS Week-1 T2m Anomaly  
Valid: 20240607 – 20240613



## 2m Temperature Week 1: Jun 07-13, 2024

Near to warmer than average surface air temperature will likely be experienced in most parts of the country.

GEFS Week-2 T2m Anomaly  
Valid: 20240614 – 20240620



## 2m Temperature Week 2: Jun 14-20, 2024

Slightly warmer to warmer surface air temperature will likely be experienced in most parts of eastern and central Luzon, while the rest of the country will likely have near to cooler than average surface air temperature.